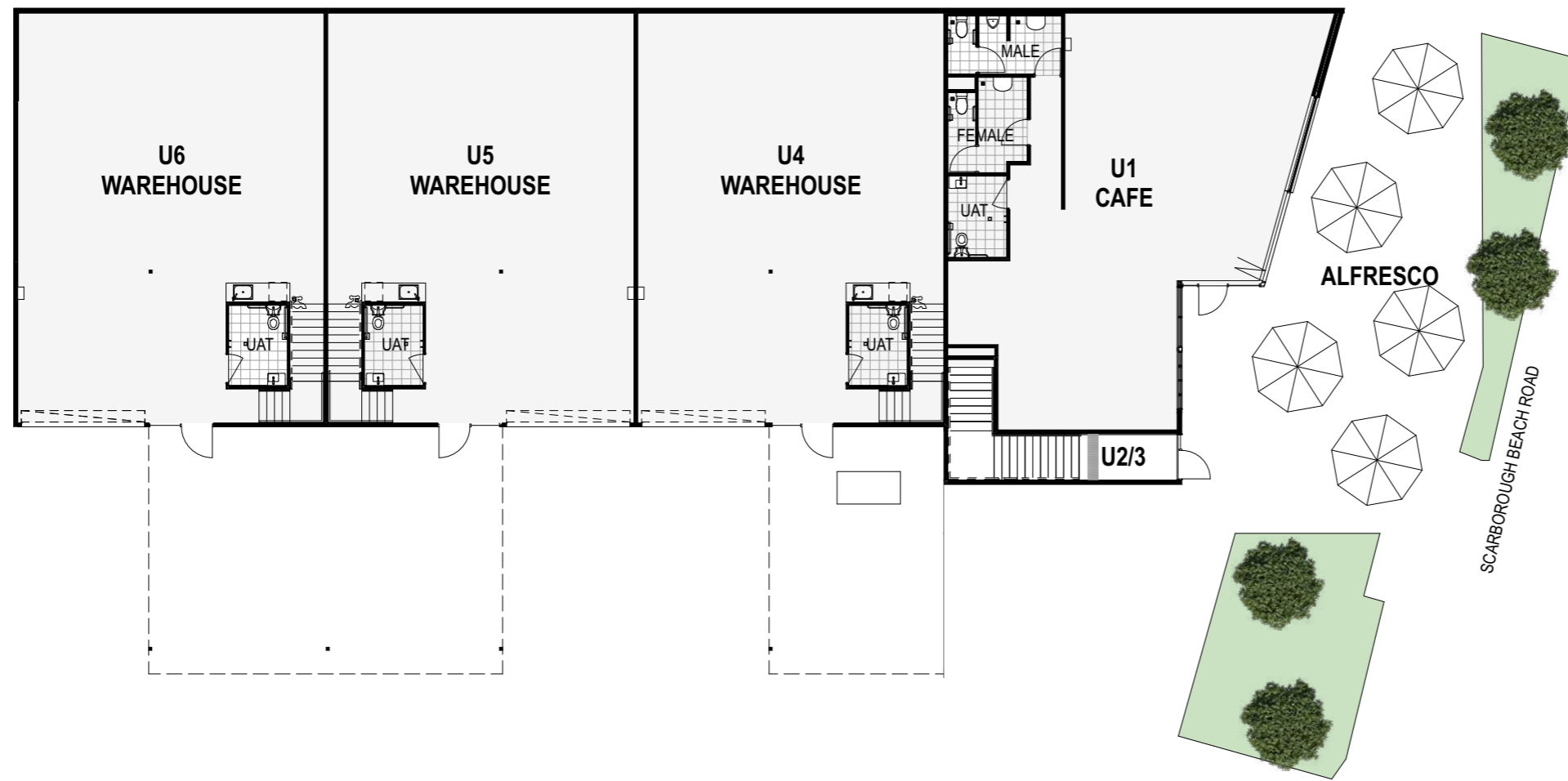


MARKETING SITE PLAN

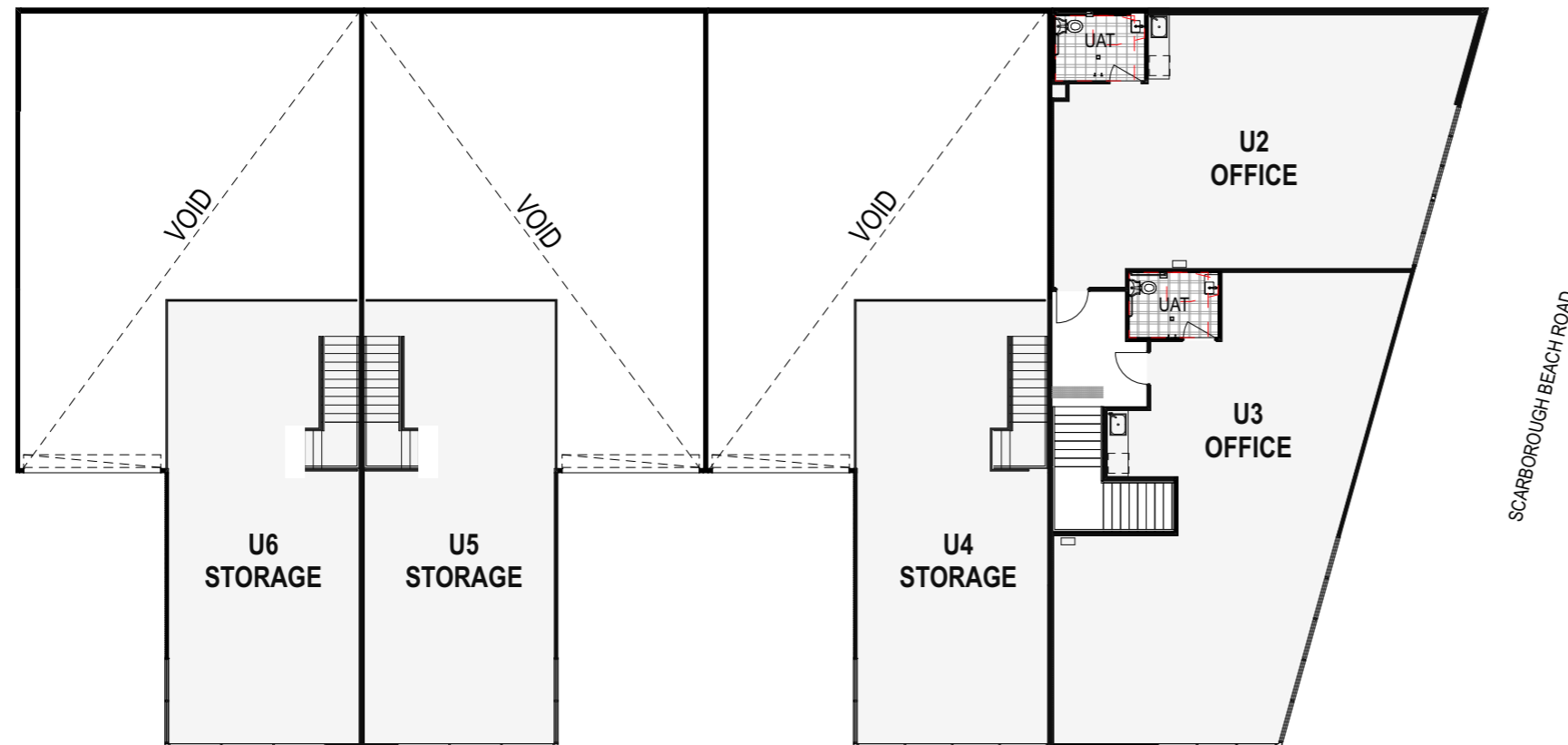
481 Scarborough Beach Road,  
Osborne Park

Development by **ZEDEX**  
Architectural by **CBD Architects**

*The plans, 3D images, videos, and any visuals aid/depiction in this presentation are for illustrative purposes only. They are intended to provide a general idea of the proposed development but may not accurately represent the final project. All plans, specifications, and features are subject to change without notice at the discretion of the developer or architect. No warranty is given, expressed, or implied, as to the accuracy or completeness of the content.*



GROUND FLOOR: UNIT 1, 4-6

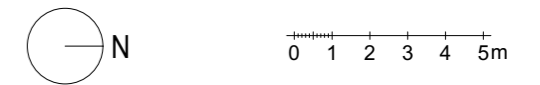
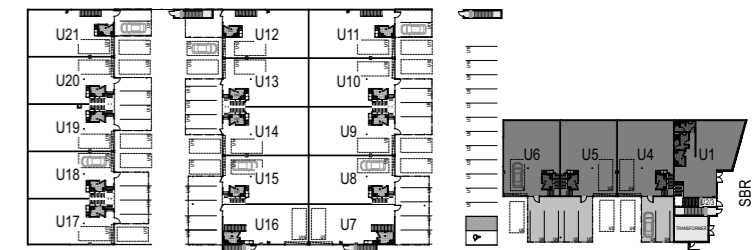


FIRST FLOOR: UNIT 2-6

GROUND FLOOR AREAS	IN SQM
U01	136
U01 ALFRESCO	95
U04	136
U05	136
U06	137

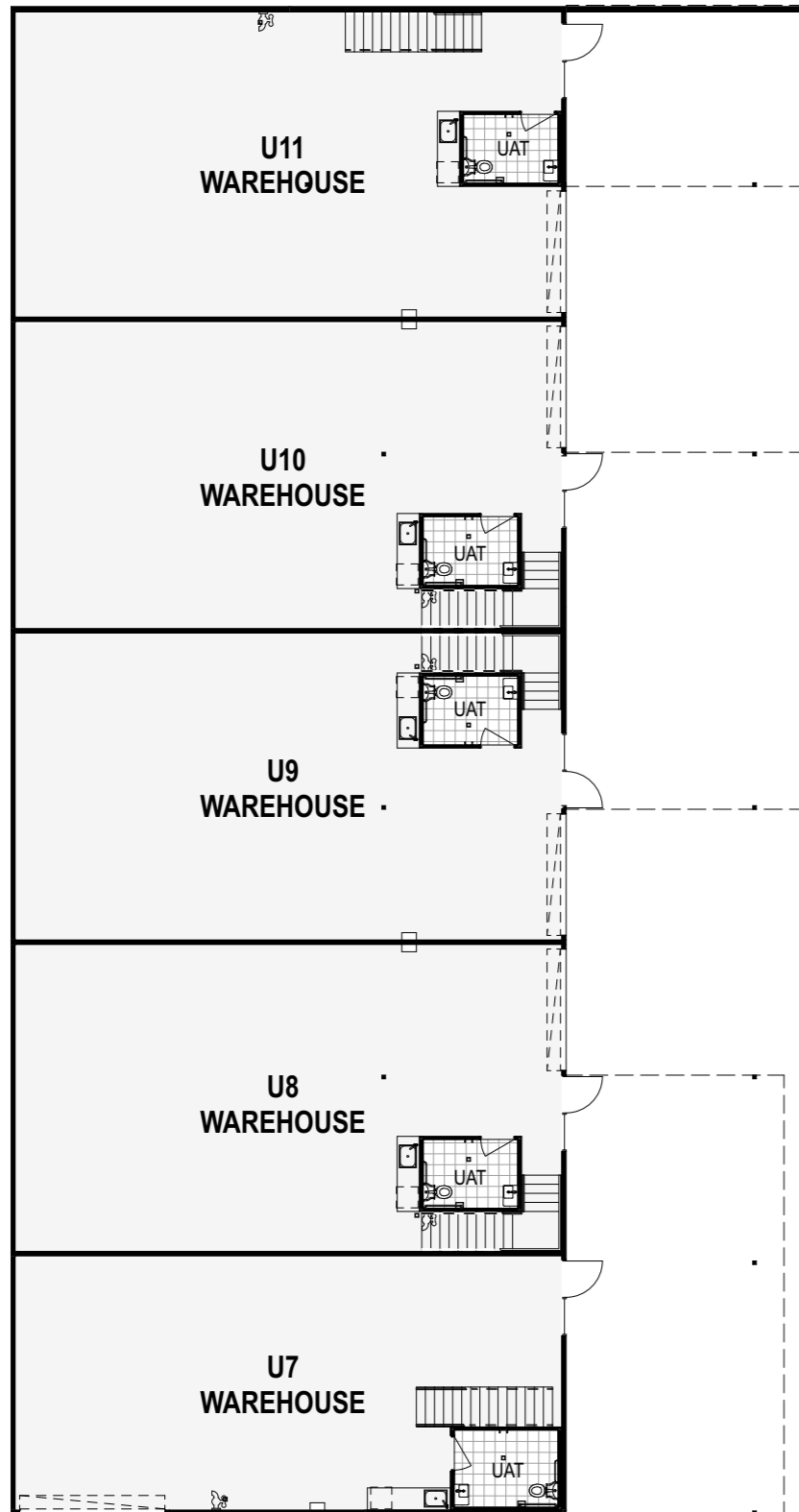
FIRST FLOOR AREAS	IN SQM
U02	91
U03	101
U04	70
U05	70
U06	70

The plans, 3D images, videos, and any visuals aid/depiction in this presentation are for illustrative purposes only. They are intended to provide a general idea of the proposed development but may not accurately represent the final project. All plans, specifications, and features are subject to change without notice at the discretion of the developer or architect. No warranty is given, expressed, or implied, as to the accuracy or completeness of the content.

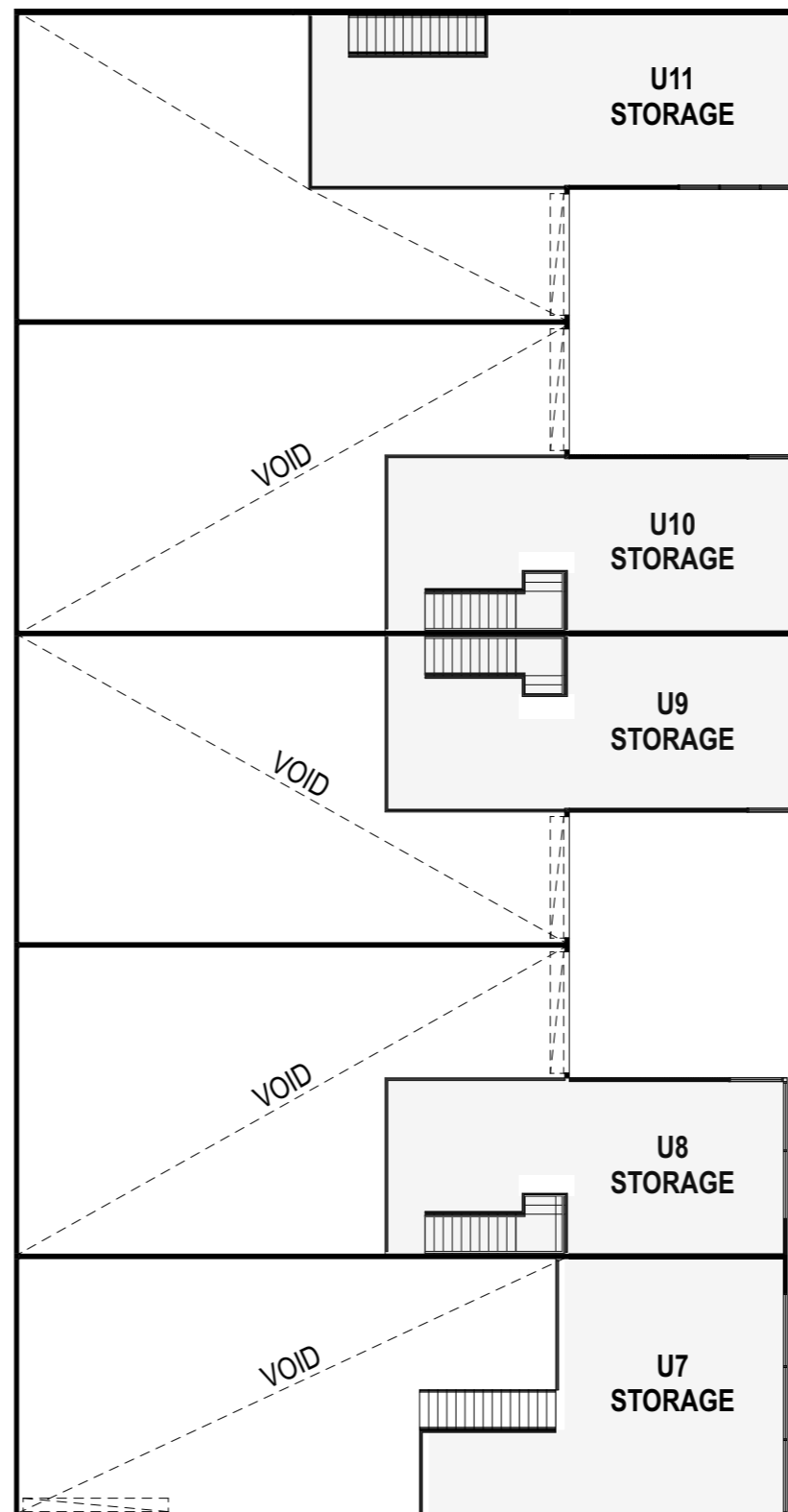


481 Scarborough Beach Road,  
Osborne Park

Development by **ZEDEX**  
Architectural by **CBD Architects**



GROUND FLOOR: UNIT 7-11

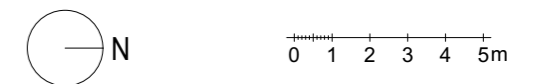
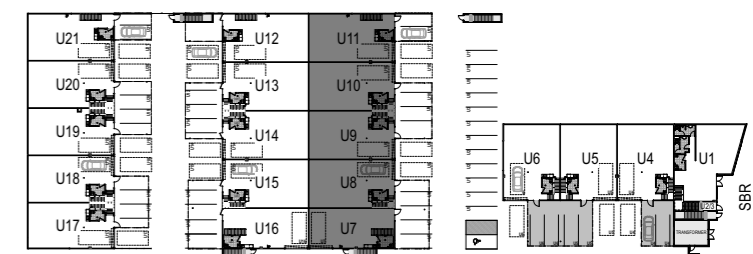


FIRST FLOOR: UNIT 7-11

GROUND FLOOR AREAS	IN SQM
U07	110
U08	131
U09	131
U10	131
U11	131

FIRST FLOOR AREAS	IN SQM
U07	55
U08	49
U09	52
U10	52
U11	63

The plans, 3D images, videos, and any visuals aid/depiction in this presentation are for illustrative purposes only. They are intended to provide a general idea of the proposed development but may not accurately represent the final project. All plans, specifications, and features are subject to change without notice at the discretion of the developer or architect. No warranty is given, expressed, or implied, as to the accuracy or completeness of the content.



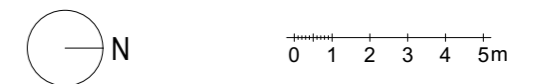
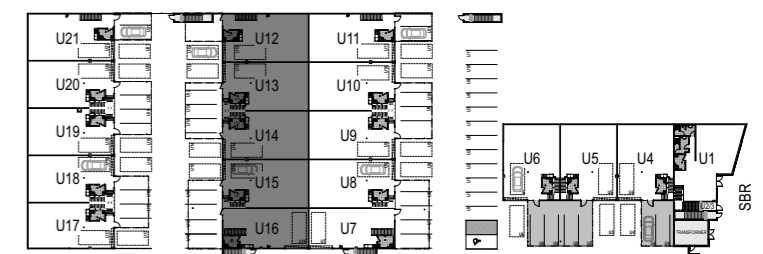
481 Scarborough Beach Road,  
Osborne Park

Development by **ZEDEX**  
Architectural by **CBD Architects**

GROUND FLOOR AREAS	IN SQM
U12	131
U13	131
U14	131
U15	131
U16	110

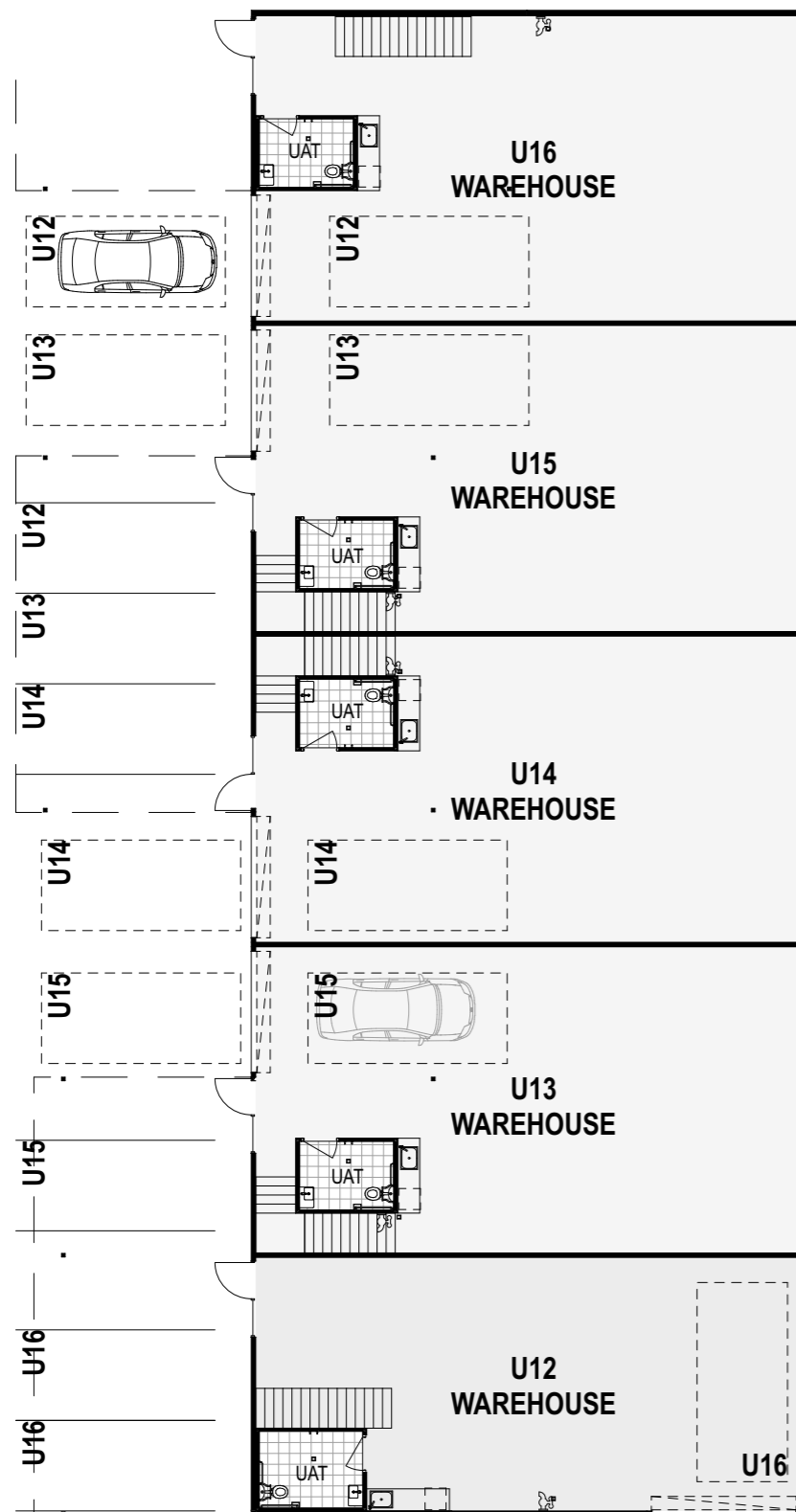
FIRST FLOOR AREAS	IN SQM
U12	63
U13	52
U14	52
U15	49
U16	55

The plans, 3D images, videos, and any visuals aid/depiction in this presentation are for illustrative purposes only. They are intended to provide a general idea of the proposed development but may not accurately represent the final project. All plans, specifications, and features are subject to change without notice at the discretion of the developer or architect. No warranty is given, expressed, or implied, as to the accuracy or completeness of the content.

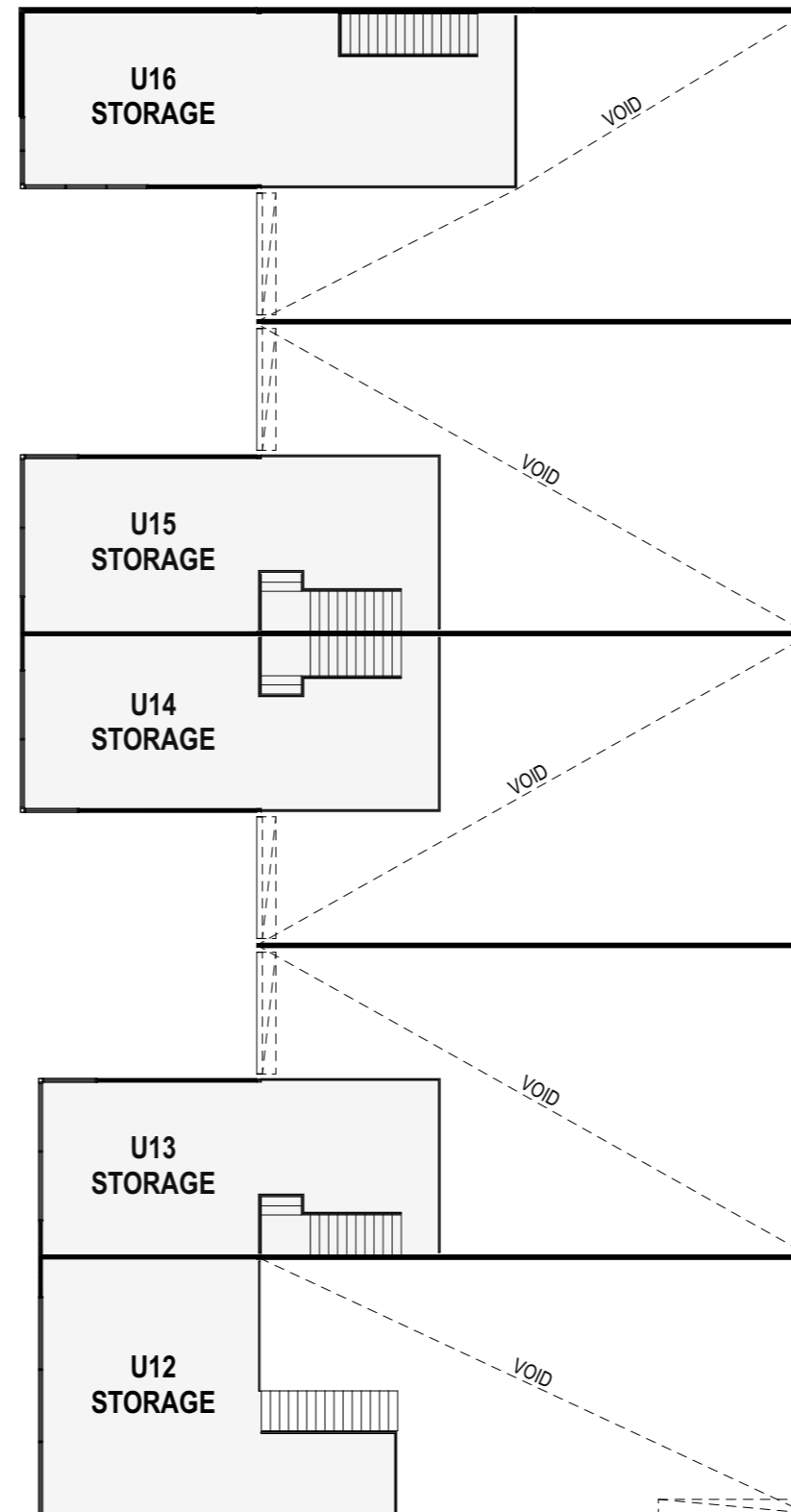


**481 Scarborough Beach Road,  
Osborne Park**

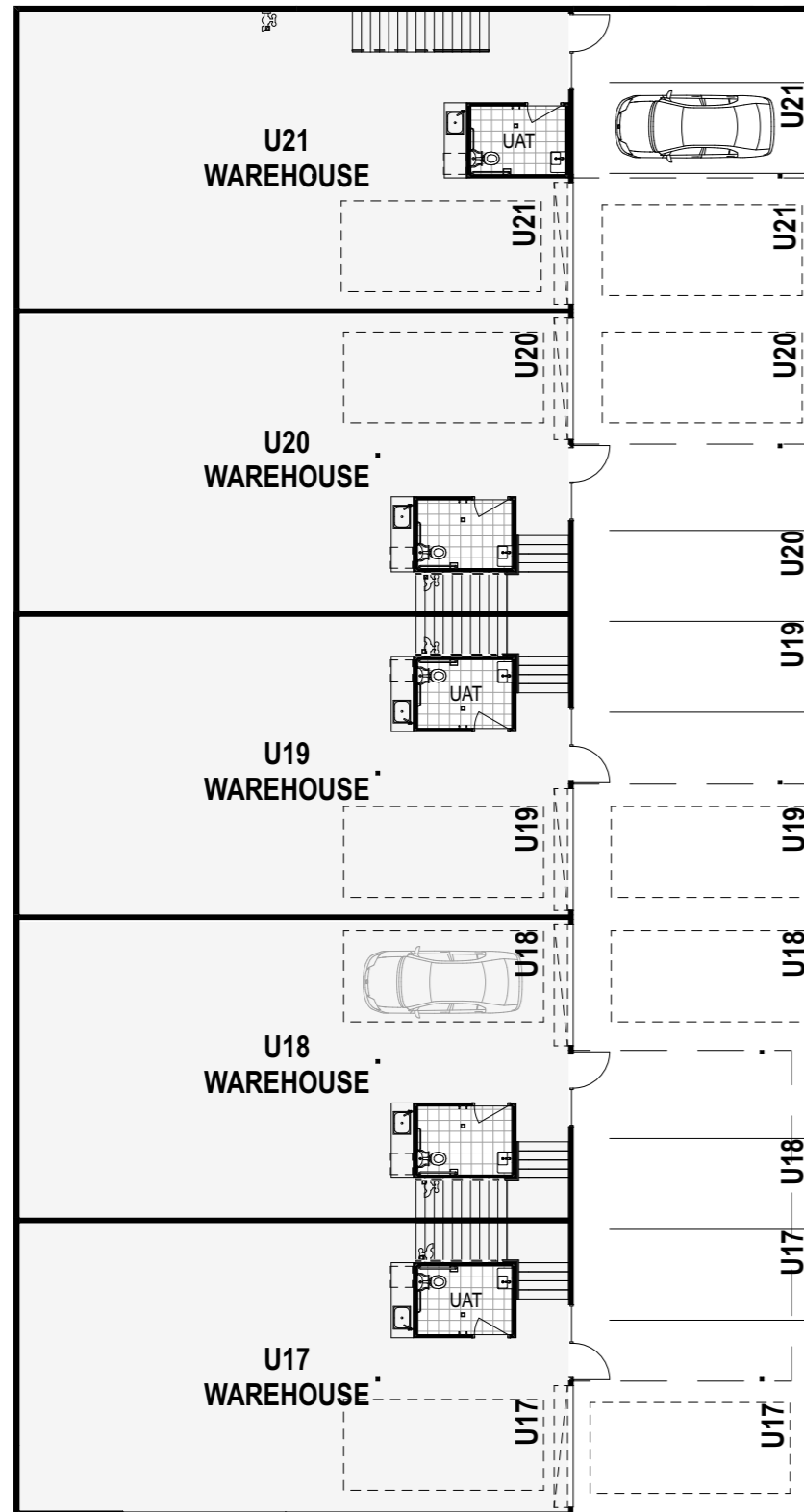
Development by **ZEDEX**  
Architectural by **CBD Architects**



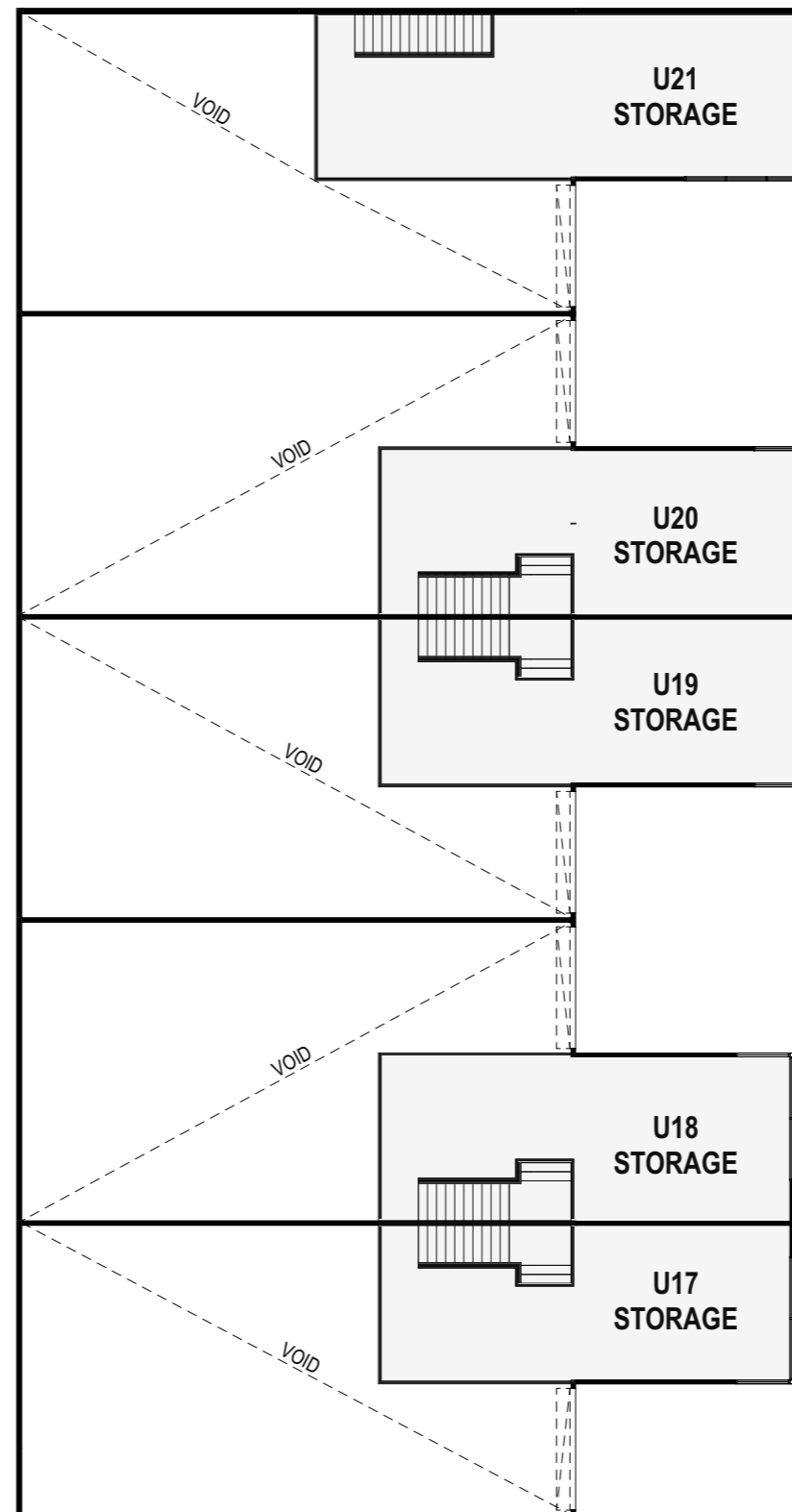
GROUND FLOOR: UNIT 12-16



FIRST FLOOR: UNIT 12-16



GROUND FLOOR: UNIT 17-21

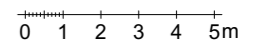
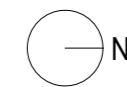
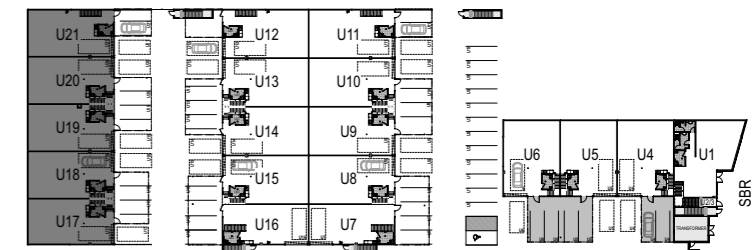


FIRST FLOOR: UNIT 17-21

GROUND FLOOR AREAS	IN SQM
U17	125
U18	128
U19	128
U20	128
U21	129

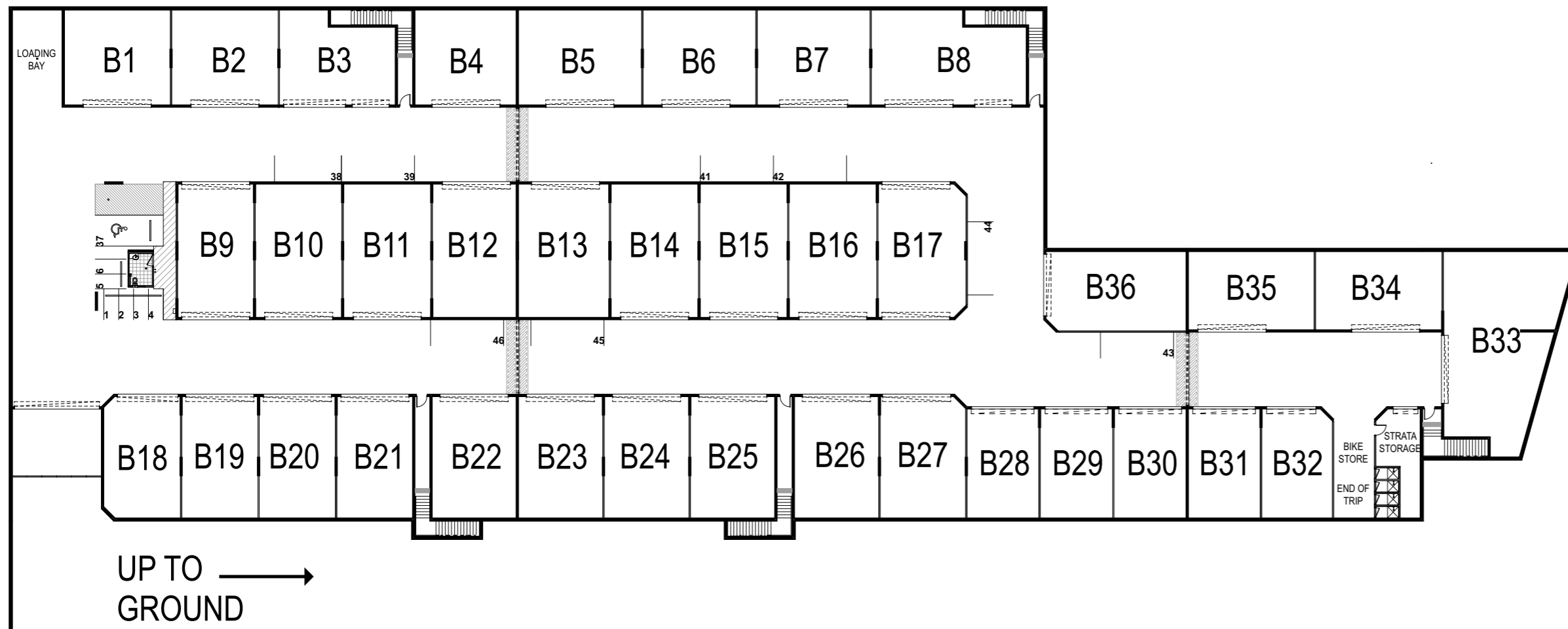
FIRST FLOOR AREAS	IN SQM
U17	45
U18	48
U19	50
U20	50
U21	60

The plans, 3D images, videos, and any visuals aid/depiction in this presentation are for illustrative purposes only. They are intended to provide a general idea of the proposed development but may not accurately represent the final project. All plans, specifications, and features are subject to change without notice at the discretion of the developer or architect. No warranty is given, expressed, or implied, as to the accuracy or completeness of the content.



481 Scarborough Beach Road,  
Osborne Park

Development by **ZEDEX**  
Architectural by **CBD Architects**



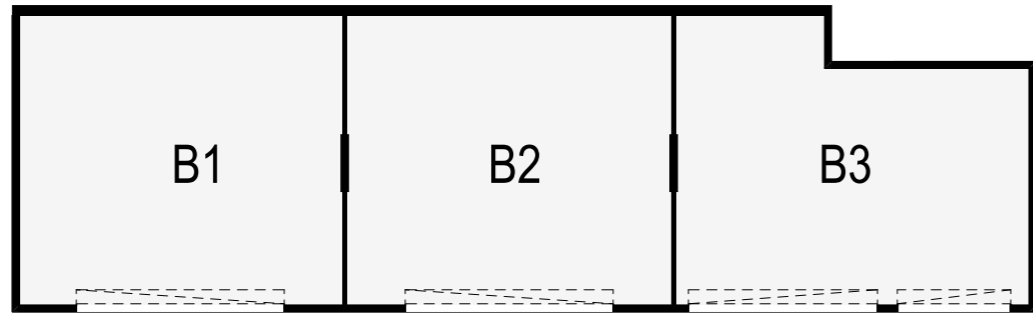
BUILDING AREAS	
BASEMENT STORAGE AREA	IN SQM
B01	71
B02	71
B03	69
B04	68
B05	82
B06	75
B07	75
B08	95
B09	71
B10	79
B11	80
B12	77
B13	83
B14	80
B15	80
B16	80
B17	80
B18	65
B19	64
B20	64
B21	64
B22	71
B23	71
B24	71
B25	71
B26	71
B27	71
B28	55
B29	55
B30	55
B31	55
B32	54
B33	144
B34	70
B35	70
B36	78

MARKETING BASEMENT FLOOR PLAN

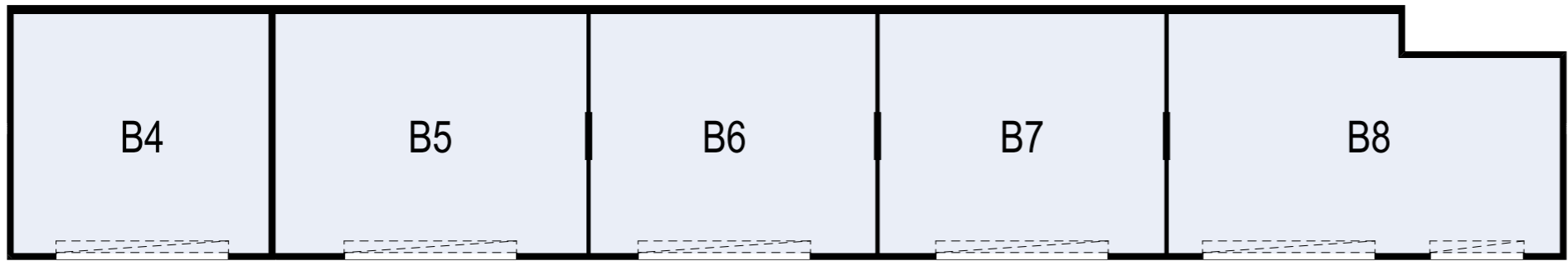
481 Scarborough Beach Road,  
Osborne Park

Development by **ZEDEX**  
Architectural by **CBD Architects**

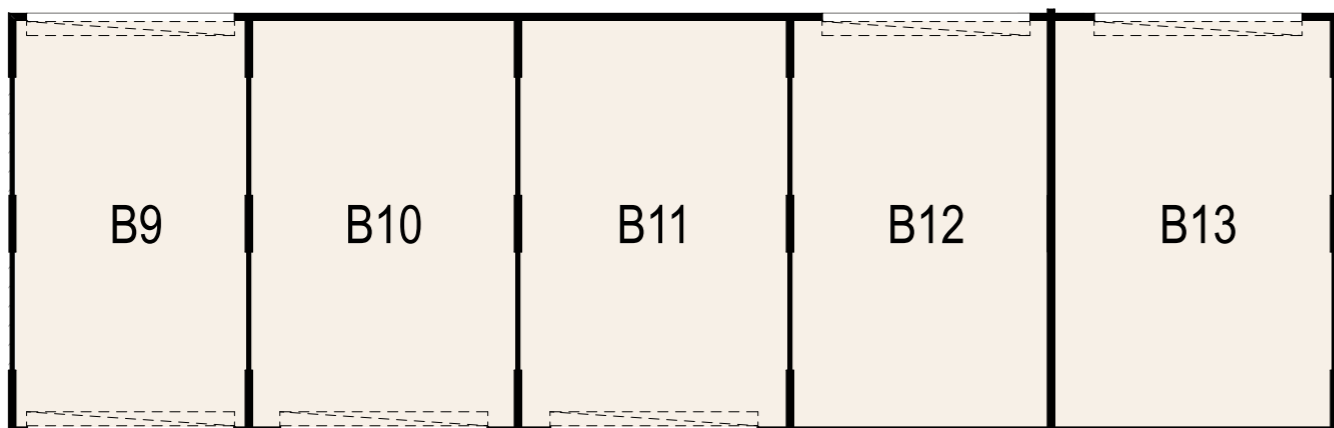
*The plans, 3D images, videos, and any visuals aid/depiction in this presentation are for illustrative purposes only. They are intended to provide a general idea of the proposed development but may not accurately represent the final project. All plans, specifications, and features are subject to change without notice at the discretion of the developer or architect. No warranty is given, expressed, or implied, as to the accuracy or completeness of the content.*



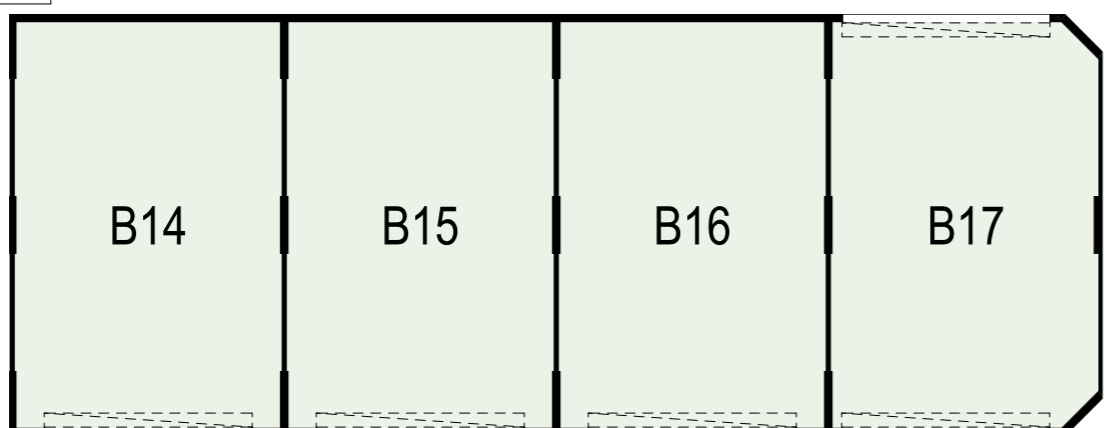
**BASEMENT FLOOR: UNIT B1-B3**



**BASEMENT FLOOR: UNIT B4-B8**



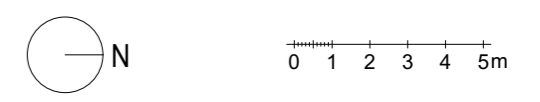
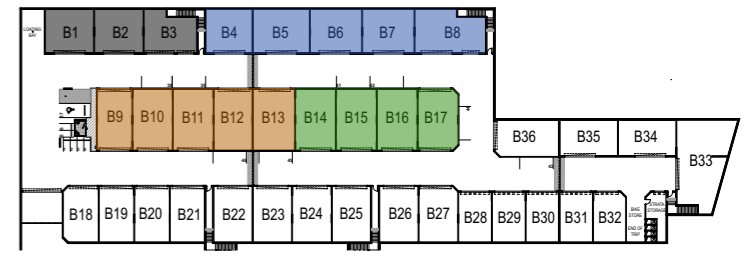
**BASEMENT FLOOR: UNIT B9-B13**



**BASEMENT FLOOR: UNIT B14-B17**

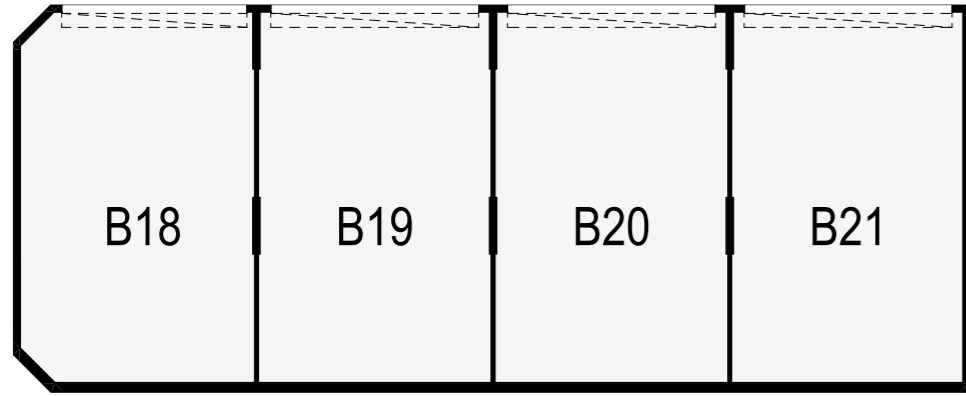
BASEMENT STORAGE AREA	IN SQM
B01	71
B02	71
B03	69
B04	68
B05	82
B06	75
B07	75
B08	95
B09	71
B10	79
B11	80
B12	77
B13	83
B14	80
B15	80
B16	80
B17	80

NOTE: AREAS SUBJECT TO CHANGE.

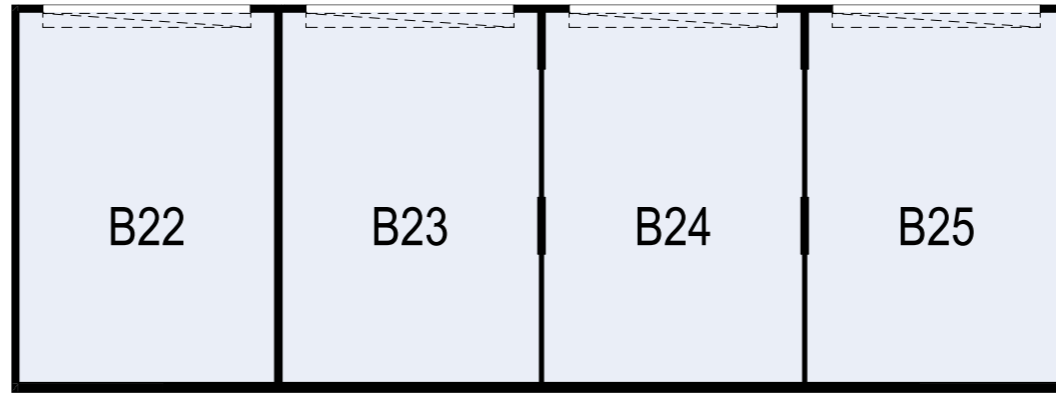


**481 Scarborough Beach Road,  
Osborne Park**

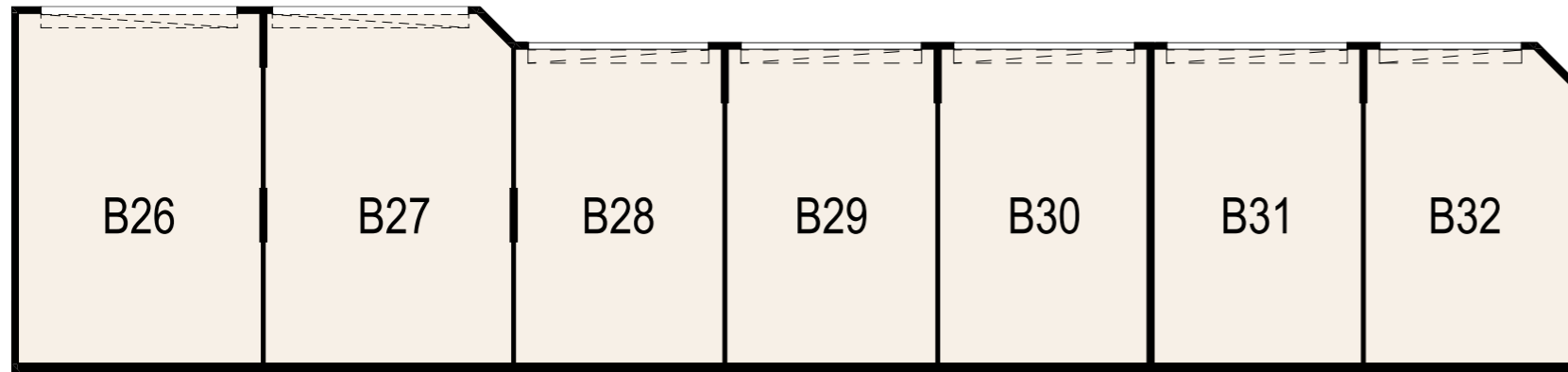
Development by **ZEDEX**  
Architectural by **CB D Architects**



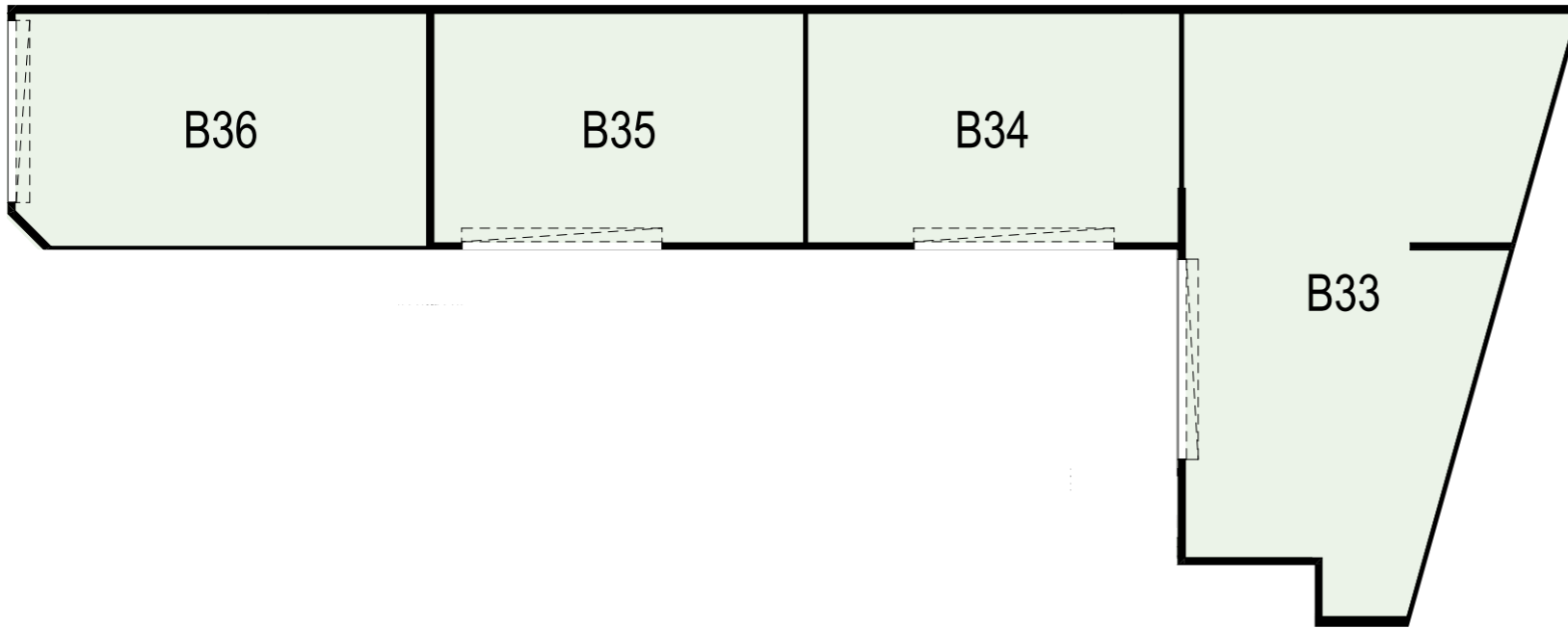
BASEMENT FLOOR: UNIT B18-B21



BASEMENT FLOOR: UNIT B22-B25



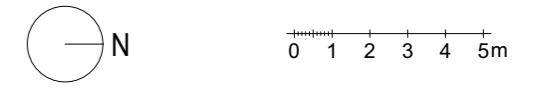
BASEMENT FLOOR: UNIT B26-B32



BASEMENT FLOOR: UNIT B33-B36

BASEMENT STORAGE AREA	IN SQM
B18	65
B19	64
B20	64
B21	64
B22	71
B23	71
B24	71
B25	71
B26	71
B27	71
B28	55
B29	55
B30	55
B31	55
B32	54
B33	144
B34	70
B35	70
B36	78

NOTE: AREAS SUBJECT TO CHANGE.



481 Scarborough Beach Road,  
Osborne Park

Development by **DEDEX**  
Architectural by **CBD Architects**